

Bakersfield College IRB Overview

Human Subjects Research Policies & Procedures

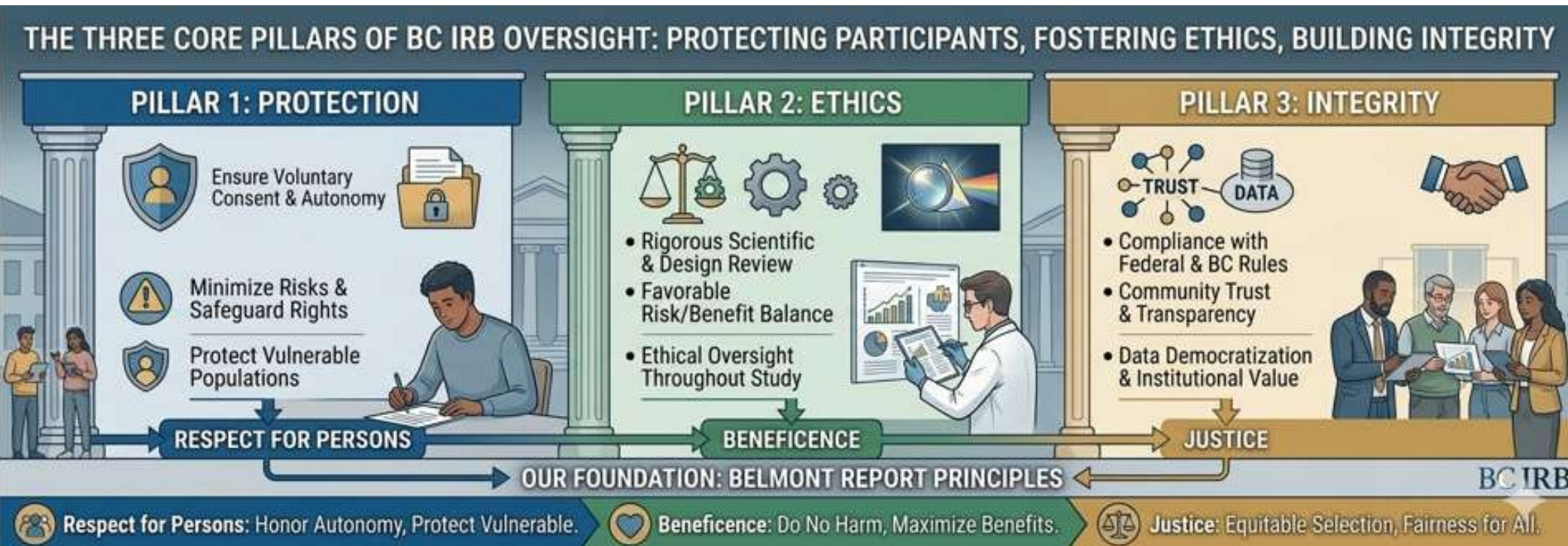
BC Institutional Review Board (IRB)



**BAKERSFIELD
COLLEGE**

Why This Matters

- Protects students and staff
- Ensures ethical research
- Supports institutional integrity



Guiding Principles

Belmont Report (Ethical Framework)

- Respect for Persons, Beneficence, Justice

Common Rule (45 CFR 46)

- Federal regulations guiding human subjects research
- Basis for IRB review and oversight

BC IRB Approval Criteria

- Risks are minimized
- Informed consent is obtained
- Privacy and confidentiality are protected

Institutional Alignment

- Mission, Vision, and Strategic Goals

Academic vs. Administrative Inquiry

Academic Research

- Systematic investigation:
structured design, data collection and analysis
- Intent: Generalizable knowledge
- External sharing
Publication and presentation intent

Administrative = internal use

- Improves local practices
Examples: program evaluation, campus climate
- May require data/research request form
- Leadership approval required
- Follow data privacy and information security policies

IRB Role

- Ethics focus
- Not judging quality
- Compliance through a Federalwide Assurance (FWA)
- Criteria for Approval (45 CFR 46 111)
 - Minimized Risk
 - Risk/Benefit Ratio
 - Equitable Selection
 - Informed Consent: Obtained and documented
 - Data Monitoring
 - Privacy/Confidentiality
 - Additional Safeguards for Vulnerable Populations

When IRB is Required

- Human Subjects “Research”
- Beyond normal operations
- Publications/dissertations
- Target: academic or professional community at large
- External or grant-funded

When IRB Not Required

- Admin studies
 - Program improvement/evaluation
 - Target: internal stakeholders
 - Results stay within BC or the District
- Internal assessments
 - e.g. Classroom-only projects
- “Exempt” Human Subjects Research
- Compliance with data privacy and information security policies

Types of Review

- Exempt
 - Minimal to No risk
 - Anonymous survey, comparing two tutoring methods at the WC
- Expedited
 - Minimal risk but confidentiality is required
 - One-on-one Interviews/focus groups; recordings
- Full Board
 - Greater than minimal risk
 - Vulnerable populations (e.g. children, prisoners)
 - Sensitive topics

Data Privacy and Security

- FERPA compliance
- Secure storage
- 3-Year Retention
- Limit access
- Aggregate reporting
- Destroy after

Informed Consent

- Cornerstone of ethical research
 - A researcher ensures that a participant understands the nature of the study and **voluntarily** agrees to participate **without any coercion**.
- Key information: purpose, duration, & procedures
- Risks/discomforts vs. benefits
- Withdraw anytime
- No “exculpatory” language
- Contact info & data storage

Submission Process

- Human Research Protection Training
- IRB Policies Review
- Submit
- Wait for approval

Questions

- We're here to support
- Let's collaborate

