

African-American Unit Completion Rates

Presenter: Julian West

Data Source: ODS Database – Student contact and Credit Info

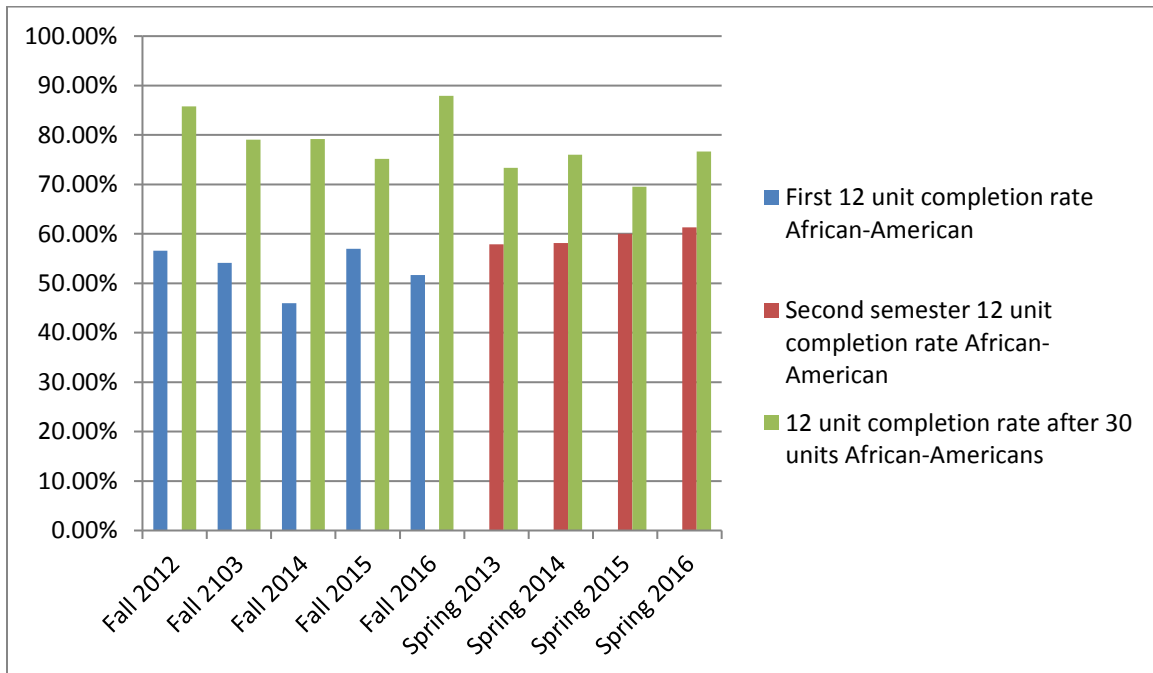
Intended Audience: College Council

Presentation Date: 5/5/2017

First 12 units, first 24 units, and beyond 30 unit completion rates:

	Fall 2016	Fall 2015	Fall 2014	Fall 2013	Fall 2012
First 12 unit completion rate African-American	51.68%	56.99%	45.99%	54.15%	56.61%
First 12 unit completion rate BC All	70.99%	69.42%	69.84%	71.79%	75.08%
12 unit completion rate after 30 units African-Americans	87.91%	75.16%	79.20%	79.04%	85.78%
12 unit completion rate after 30 units BC All	86.46%	82.00%	82.83%	83.30%	78.04%

	Spring 2017	Spring 2016	Spring 2015	Spring 2014	Spring 2013
Second semester 12 unit completion rate African-American		61.34%	60%	58.17%	57.92%
Second semester 12 unit completion rate BC All		74.10%	72.50%	74.47%	75.07%
12 unit completion rate after 30 units African-Americans		76.68%	69.53%	76%	73.36%
12 unit completion rate after 30 units BC All		84.47%	82.09%	83.35%	84.33%



African-American Unit Completion Rates

Presenter: Julian West

Data Source: ODS Database – Student contact and Credit Info

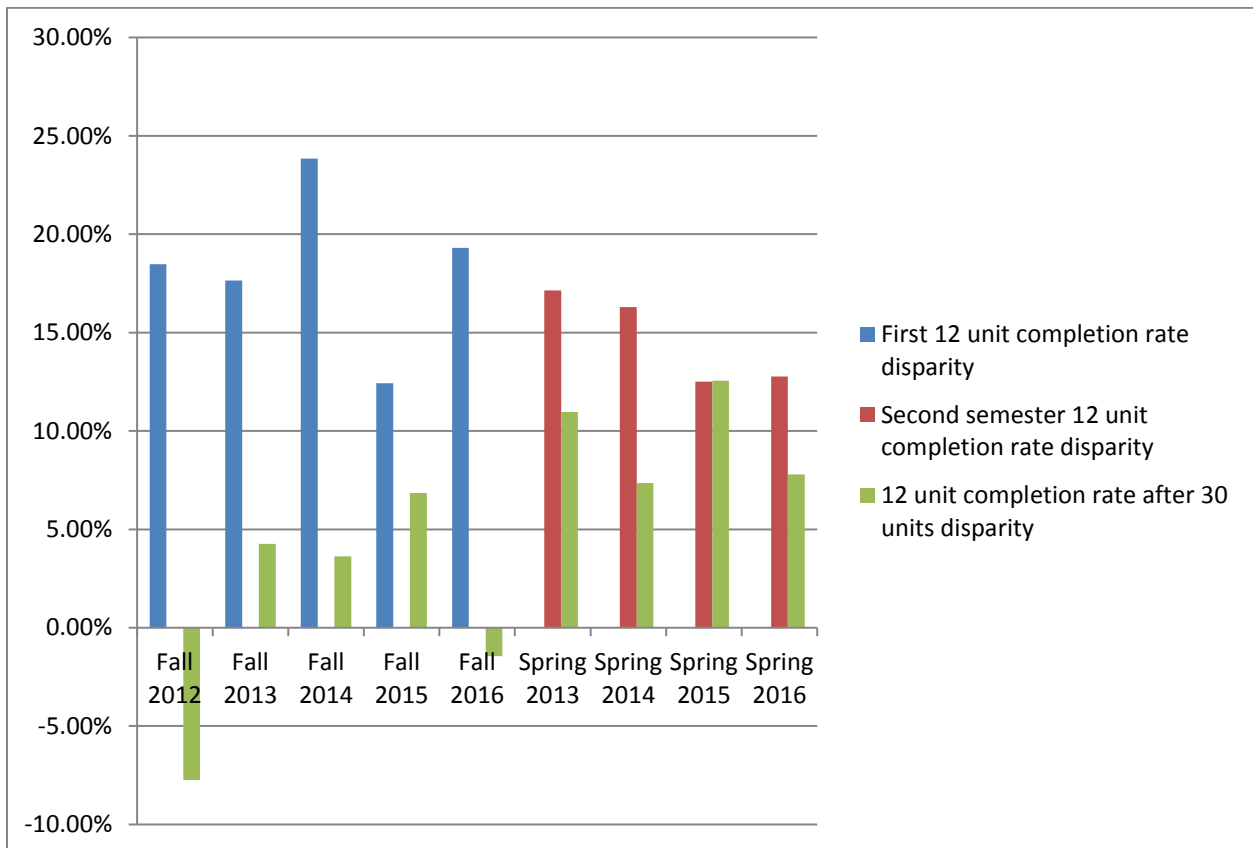
Intended Audience: College Council

Presentation Date: 5/5/2017

African-American Unit Completion Rate Disparities:

	Fall 2016	Fall 2015	Fall 2014	Fall 2013	Fall 2012
First 12 unit completion rate African-American	51.68%	56.99%	45.99%	54.15%	56.61%
First 12 unit completion rate BC All	70.99%	69.42%	69.84%	71.79%	75.08%
Disparity	19.31%	12.43%	23.85%	17.64%	18.47%
12 unit completion rate after 30 units African-Americans	87.91%	75.16%	79.20%	79.04%	85.78%
12 unit completion rate after 30 units BC All	86.46%	82.00%	82.83%	83.30%	78.04%
Disparity	1.45%	6.84%	3.63%	4.26%	7.74%

	Spring 2017	Spring 2016	Spring 2015	Spring 2014	Spring 2013
Second semester 12 unit completion rate African-American		61.34%	60%	58.17%	57.92%
Second semester 12 unit completion rate BC All		74.10%	72.50%	74.47%	75.07%
Disparity		12.76%	12.50%	16.30%	17.15%
12 unit completion rate after 30 units African-Americans		76.68%	69.53%	76%	73.36%
12 unit completion rate after 30 units BC All		84.47%	82.09%	83.35%	84.33%
Disparity		7.79%	12.56%	7.35%	10.97%



African-American Unit Completion Rates

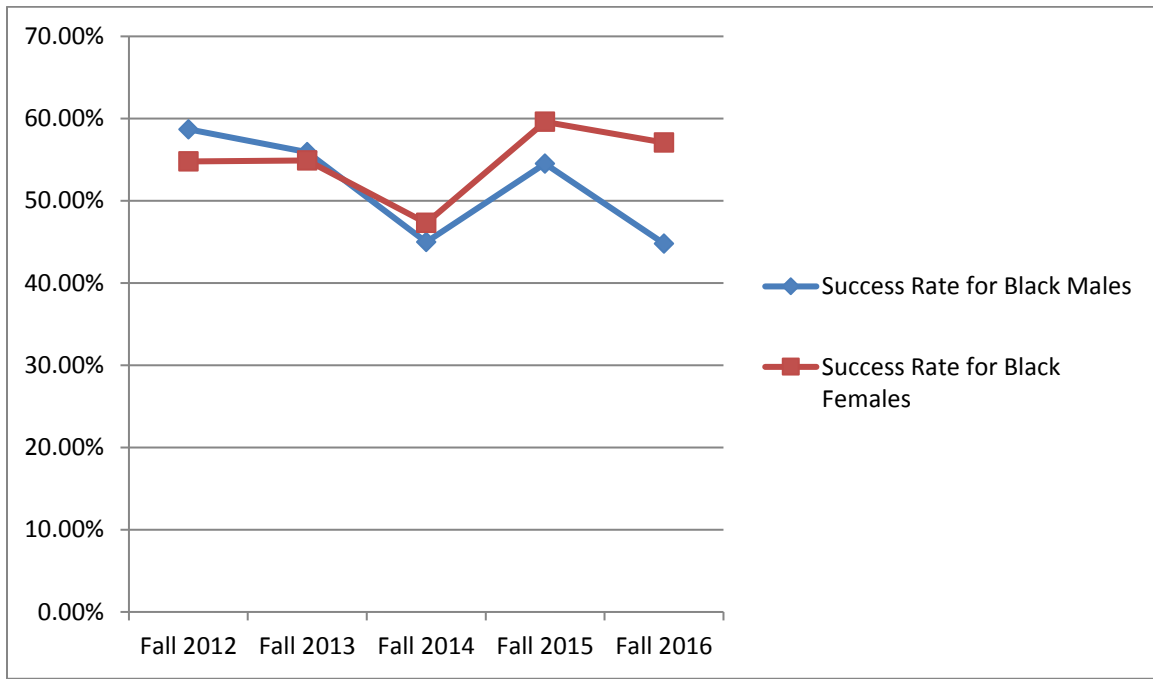
Presenter: Julian West

Data Source: ODS Database – Student contact and Credit Info

Intended Audience: College Council

Presentation Date: 5/5/2017

Comparison of African-American Males and Females in first 12 units:



	Fall 2016	Fall 2015	Fall 2014	Fall 2013	Fall 2012
Success Rate for Black Males	44.80%	54.50%	45%	55.90%	58.70%
Success Rate for Black Females	57.10%	59.60%	47.30%	54.90%	54.80%

Dual Enrollment for Men the Fall Semesters:

	Fall 2016	Fall 2015	Fall 2014	Fall 2013	Fall 2012
Black Males Success Rate in Dual Enrollment	100.00%	N/A	N/A	N/A	N/A
Number of Black Males in Dual Enrollment	10	0	0	0	0
All Other Males Success Rate in Dual Enrollment	93.80%	84.80%	85.00%	83.40%	92.30%
Number of Other Males in Dual Enrollment	771	264	94	61	26

African-American Unit Completion Rates

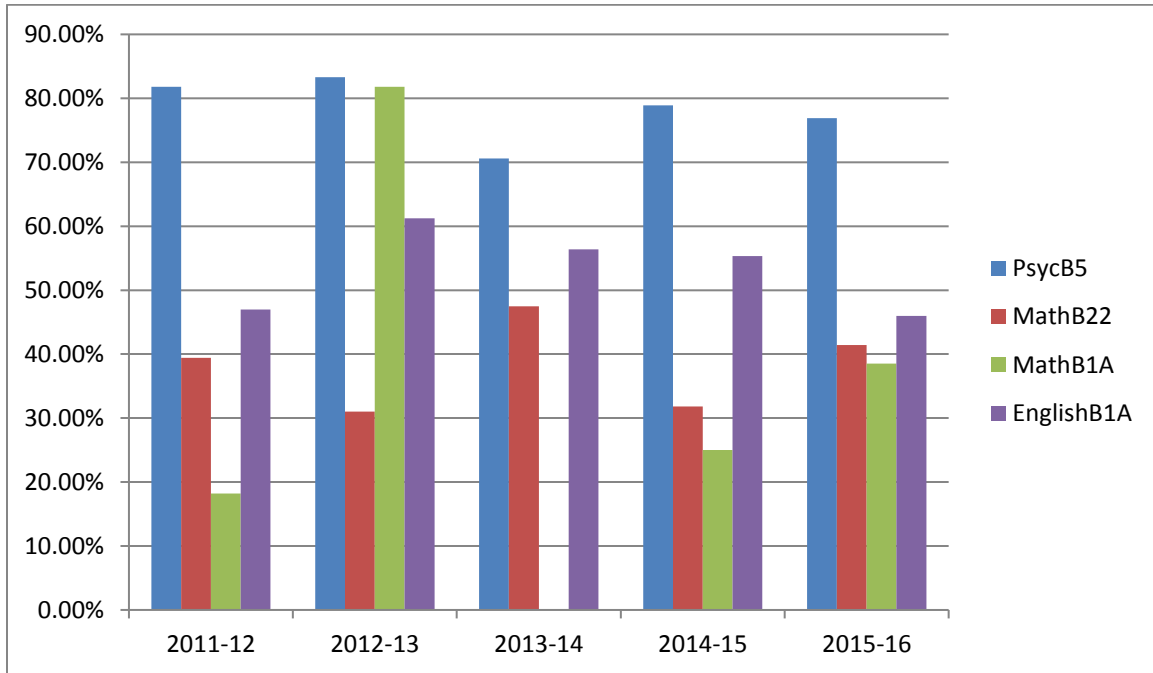
Presenter: Julian West

Data Source: ODS Database – Student contact and Credit Info

Intended Audience: College Council

Presentation Date: 5/5/2017

College Level English and Math Success Rates:



	2011-12	2012-13	2013-14	2014-15	2015-16
African American Success Rate in MATHB22	39.40%	31%	47.50%	31.80%	41.40%
Bakersfield College Success Rate in MATHB22	55.50%	57.50%	59.90%	56.20%	57.80%
Disparity	16.10%	26.50%	12.40%	24.40%	16.40%
African American Success Rate in MATHB1A	18.20%	81.80%	0%	25%	38.50%
Bakersfield College Success Rate in MATHB1A	37%	52.50%	41.10%	48.90%	40.60%
Disparity	18.80%	29.30%	41.10%	23.90%	2.10%
African American Success Rate in PSYCB5	81.80%	83.30%	70.60%	78.90%	76.90%
Bakersfield College Success Rate in PSYCB5	84.10%	81%	86.40%	85.50%	84.50%
Disparity	2.30%	2.30%	15.80%	6.60%	7.60%
African American Success Rate in ENGLB1A	47%	61.25%	56.40%	55.35%	46%
Bakersfield College Success Rate in ENGLB1A	59.70%	62.80%	63.50%	62.50%	58.40%
Disparity	12.70%	1.55%	7.10%	7.15%	12.40%