

Facilities Planning Presentation to the Bakersfield College Council

Craig Rouse
FAS Leadership
July 24, 2014



1913....1955....



Overview

Facilities Master Plan

Future Projects

Funding Strategies

Questions

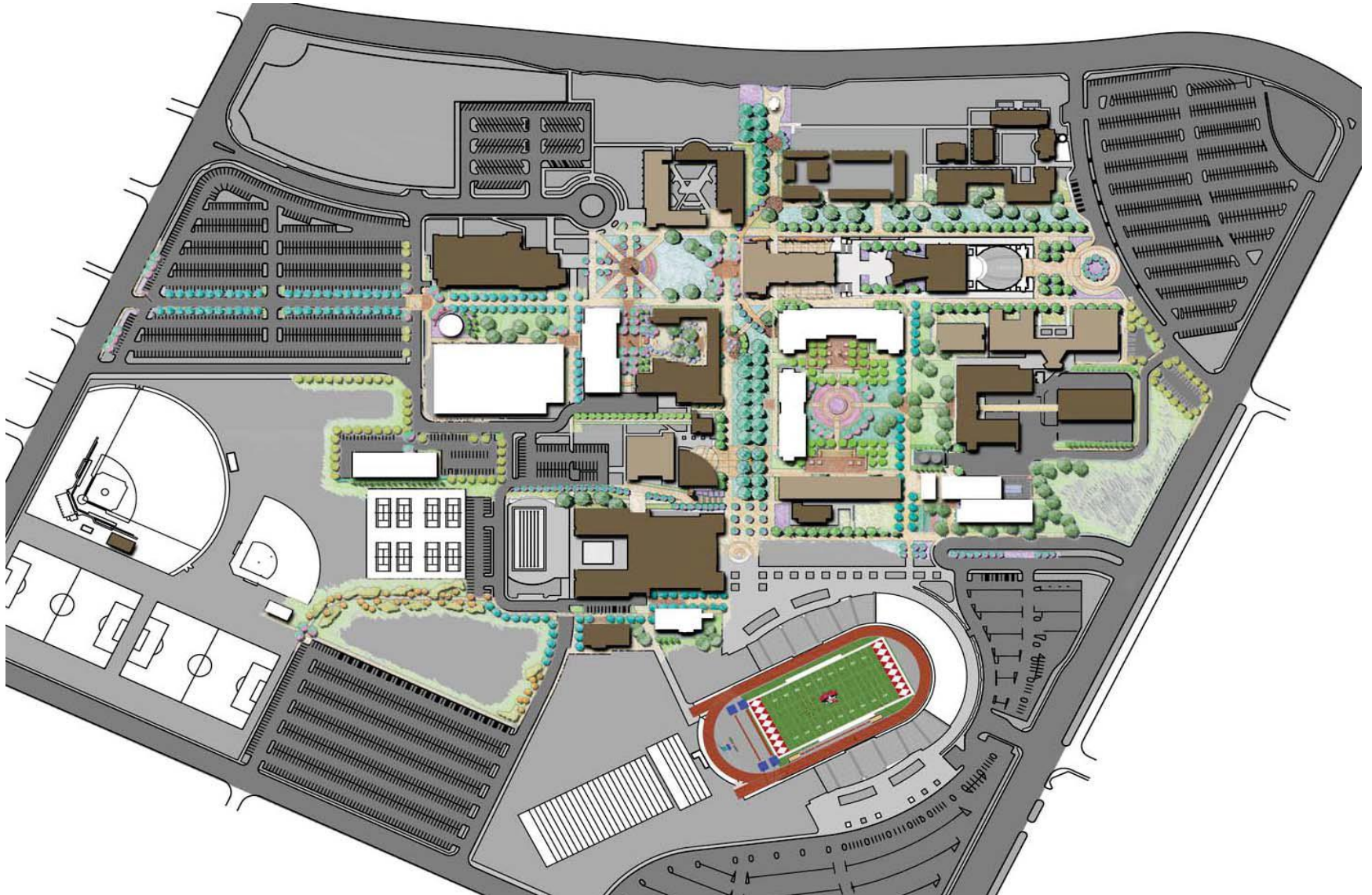
Facilities Master Plan Highlights

- **STEM Neighborhood**
 - Math / Science / Engineering
 - Stem Student Success Center
- **Student Success**
 - Student Services (Welcome Center)
 - Student Services (Student Support Services)

- **Agriculture**
 - Ag Engineering / Horticulture / Pedestrian Elevator
 - Horticulture Field Lab
- **Health, Physical Education & Athletics**
 - Memorial Stadium
 - Title IX
 - PE and Athletics Complex

- **Maintenance & Operations**
 - Infrastructure
 - M&O Building
- **ABC Building**
 - Bookstore
 - Executive Offices and foundation
 - Conference Center

Facilities Master Plan



Stem Building

darden
architects
Established 1959

South Elevation



West Elevation

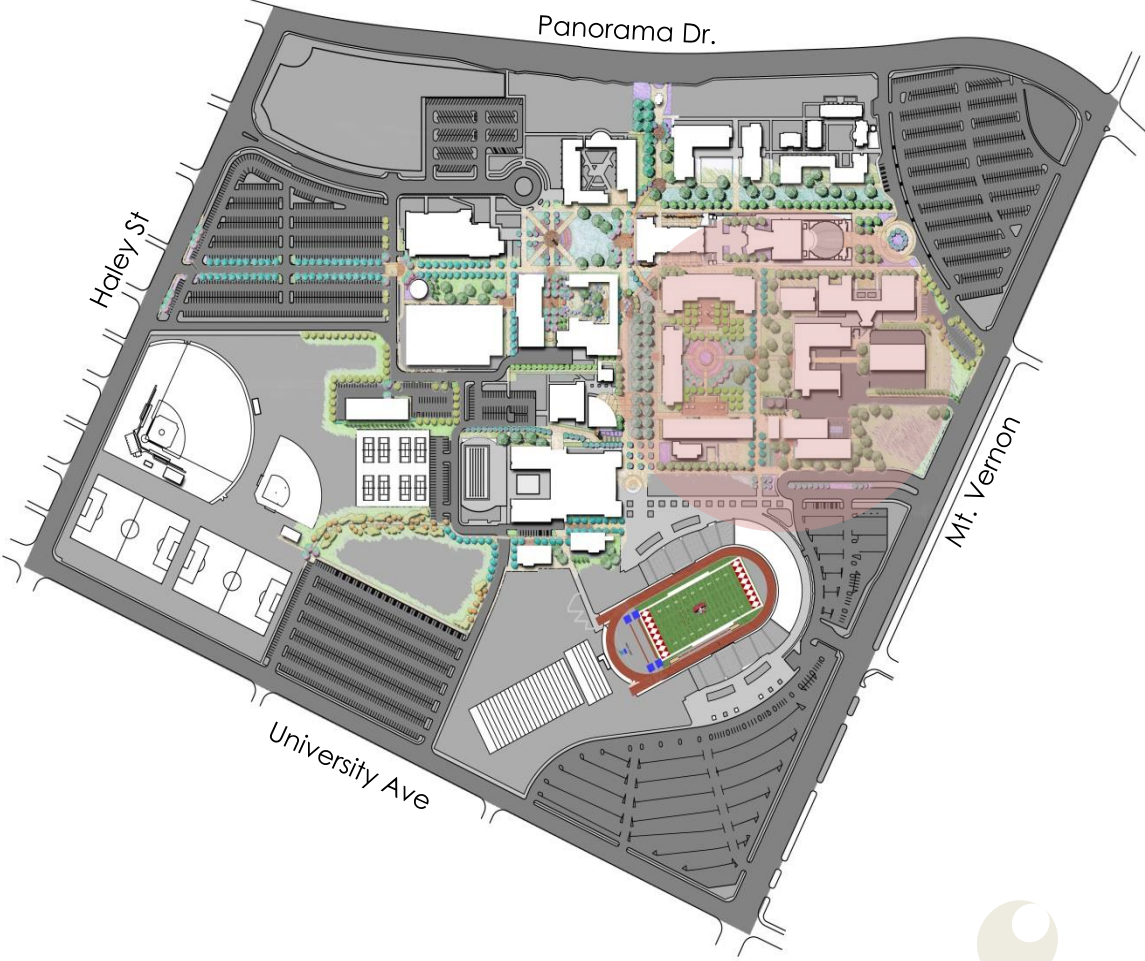


East Elevation



Bakersfield College Kern Community College District
BC STEM Grant Building Project

STEM Neighborhood

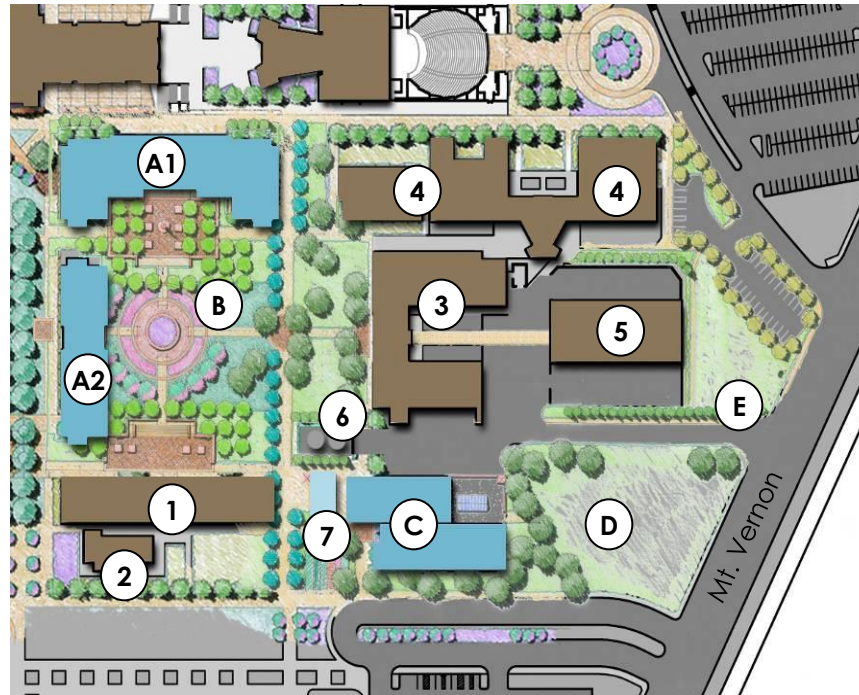


Goals

- Create a Strong STEM Neighborhood
- Minimize Swing Space Required (limited to AG Science)
- Mitigates Building Scale
- Improves Pedestrian access / campus connection (To Industrial & Auto Technologies – Buildings 3 & 5)
- Enhances North / South pedestrian connection between campus & parking
- Mitigates grade issues / accessibility (C)
- Minimizes pedestrian & service movement conflicts
- Significant visual impact on core of campus and Mt. Vernon Entry

Impacts

- Relocation of Stem Center Optional



Existing Buildings/Improvements

1. Planetarium/Allied Health/ Classroom Building
2. Allied Health
3. Industrial Technology
4. Fine Arts
5. Auto Technology
6. Cooling Tower Yard
7. STEM Center (in progress)

Proposed Buildings

- A. Math / Science / Engineering
 - A1. Science Engineering (Phase 1)
 - A2. Mathematics (Phase 2)
- B. STEM Courtyard
- C. AG Engineering / Horticulture/ Pedestrian Elevator
- D. Horticulture Field Lab
- E. New Service Access

Student Services



Student Services

Goals

- Consolidate Student Services
- Provide "Front End Services" convenient to parking / edge of campus
- Accommodate growth and re-design for Basic Skills
- Minimize swing space (allows for phasing of Student Services)
- Engage / Enliven Library Quad / Green
- Accommodate ease of public access to Administration, Conferencing, & Culinary Arts
- Create synergies with relocation of Administration:

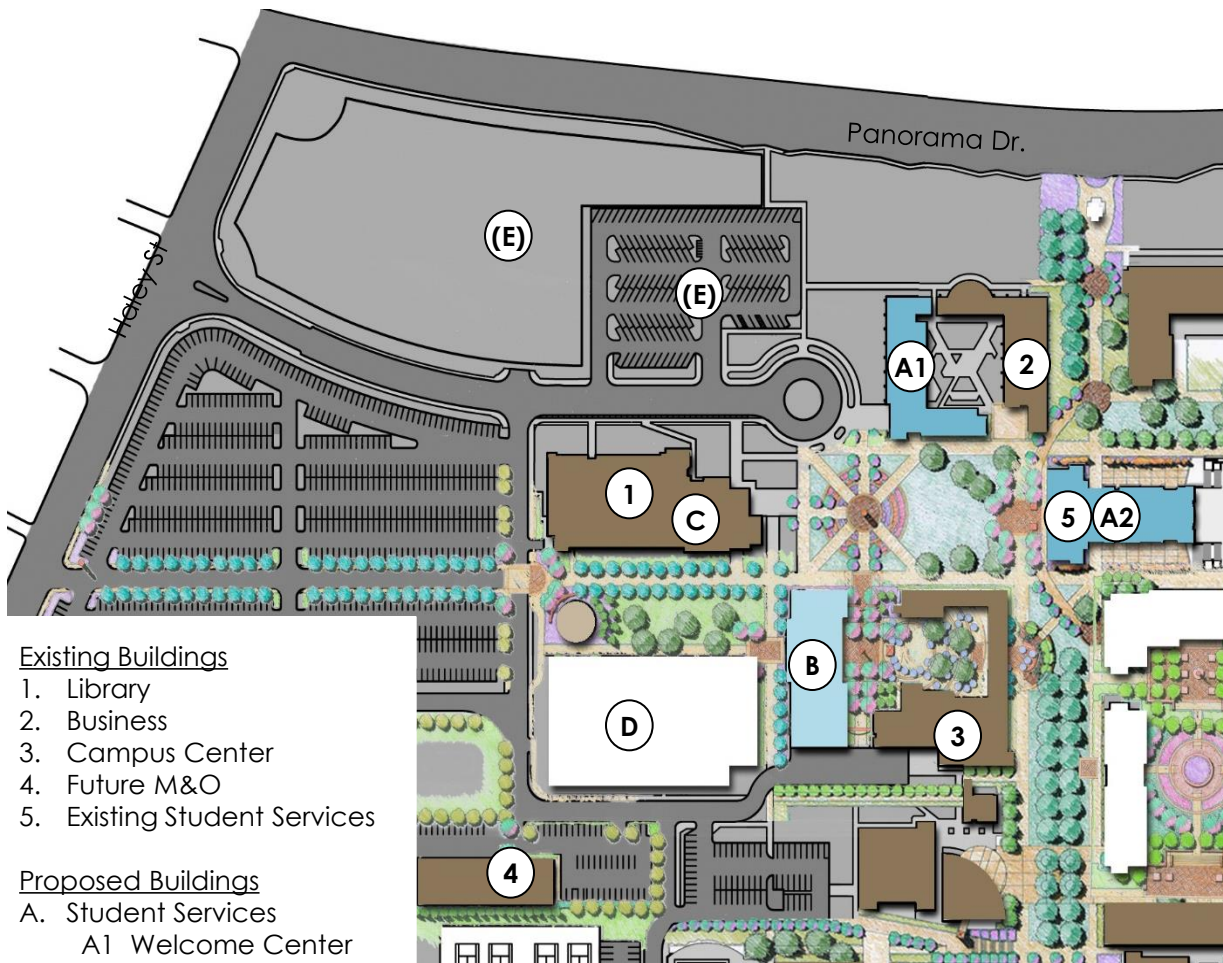
Culinary / Conference

Conference / Campus Center

Conference / Administration

Impacts

- Swing Space Required (Bookstore, Fiscal & Student Support Services)
- Requires relocation of Administration

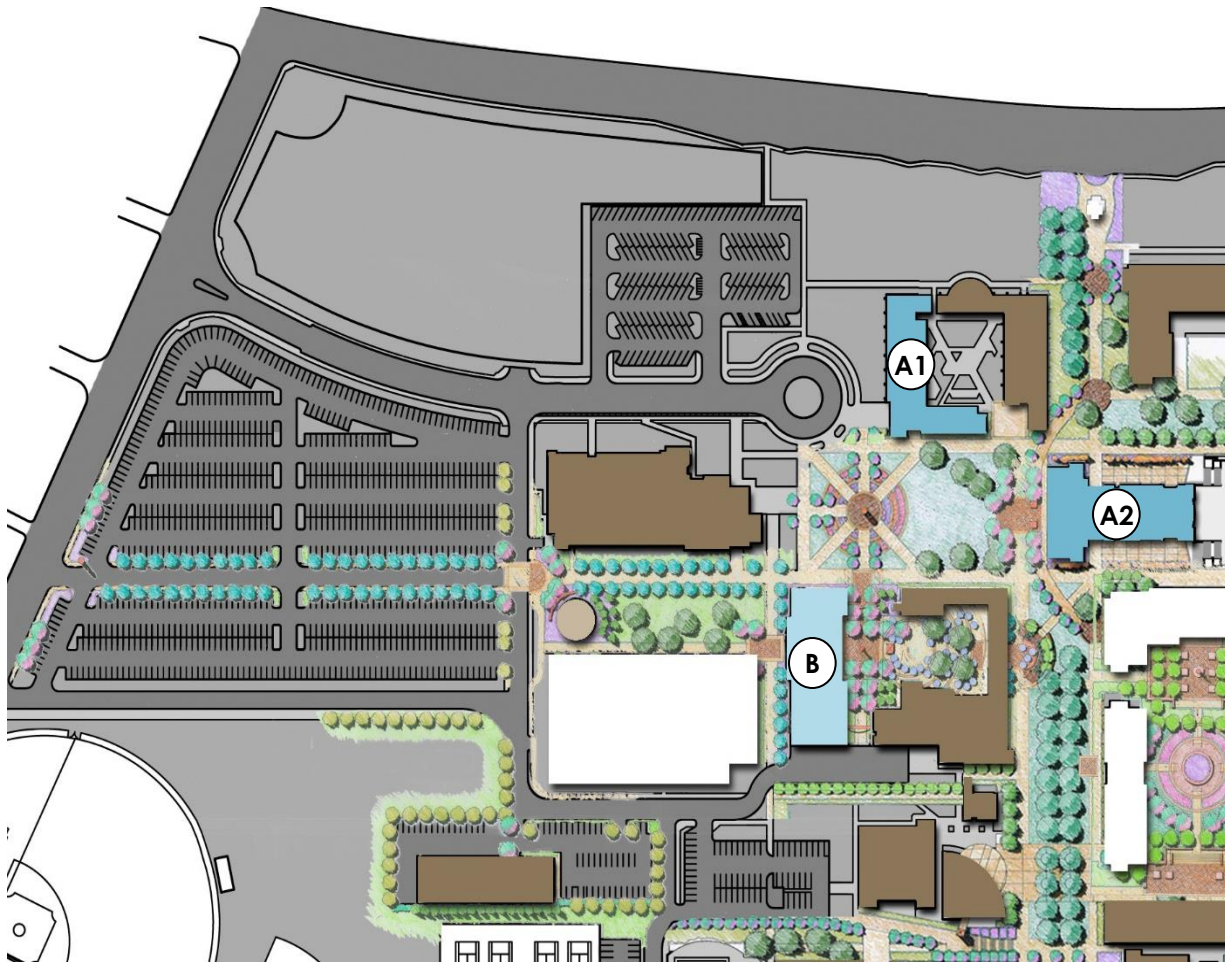


Existing Buildings

1. Library
2. Business
3. Campus Center
4. Future M&O
5. Existing Student Services

Proposed Buildings

- A. Student Services
 - A1 Welcome Center
 - A2 Student Support Services
- B. Bookstore, Culinary Arts, Conferencing, Administration
- C. Archive
- D. Future Building Pad



A1. Student Services: Welcome Center

- Counseling
- Financial Aid
- Assessment Center/Matriculation
- Admissions and Records
- Outreach
- Cashier

A2. Student Services: Student Support

- Basic Skills
- ESL/Writing Center
- Reading
- Tutorial Center
- DSPS
- Job Placement
- Health Center
- Transfer/Career Center
- EOPS/Care/CalWorks

B. Book Store/Culinary Arts/Conferencing /Administration (26,600 ASF / 40,923 GSF)

- Book Store (8,600ASF)
- Culinary Arts (4,500 ASF)
- Administration (9,000 ASF)
 - President's Complex
 - VP's Instruction
 - Fiscal Operations
 - Human Resources
 - Foundation
- Meeting/Assembly (4,500 ASF)

Future Projects: Additional Details

- New ABC Building
 - Consolidate Administrative Functions
 - Large Conference Room
 - Meeting Rooms
 - Culinary Program Classrooms
 - Conference Room Naming Opportunity
- Campus Center Remodel
 - Modernize Existing Facilities
 - Culinary Arts

Future Projects

- Language Arts Basement
 - Swing Space for Projects
 - Future Classrooms and Labs
 - Meeting Rooms

- STEM Grant Building
 - Increase Student Enrollment
 - Provides Outreach, Counseling, Guidance

Funding Strategies

- General Fund
- SRID Local Bond
- State Bond (matching funds)
- Grants (Stem Grant)
- Prop 39 Energy Savings Projects
- Donations

Future Project Funding

Stem Grant Building

Funding

- Total Project Budget \$1,000,000
 - Private Philanthropy \$500,000 (done)
 - Stem Grant \$350,000
 - SRID Local Bond \$150,000

ABC Building (Bookstore, Exec. Office and foundation, Conference Center)

- Total Project Budget \$17,289,967
 - Private Philanthropy \$7,000,000 ? (future)
 - SRID Local Bond \$10,289,967

Campus Center Remodel

- Total Project Budget \$5,000,000
 - Private Philanthropy \$0 Potential project for consideration
 - SRID Local Bond \$5,000,000

Future Project Funding

Language Arts Swing Space

Funding

- Total Project Budget \$2,000,000
 - Private Philanthropy
 - SRID Local Bond \$2,000,000

MS, SE Replacement

- Total Project Budget \$65,108,473
 - Private Philanthropy
 - Future State Bond \$41,731,000
 - Future Local Bond \$23,377,473

Student Services Remodel

- Total Project Budget \$23,754,840
 - Private Philanthropy
 - Future State Bond \$20,191,614
 - Future Local Bond \$3,563,226

Future Project Funding

Memorial Stadium

- Total Project Budget
 - Private Philanthropy
 - SRID Local Bond

Funding

\$3,000,000

Bond Process

- When: 2016
- Why: Needs of facility, energy conservation, outdated learning environment
- What: Bond geographic area to include Delano and Weill Institute
- Who: BC Foundation, Delano, employee constituency groups, SGA
- How: BC Foundation, Internal Bond Committee, SGA and Employee Constituency groups

Facilities Planning Presentation to the Bakersfield College Council

Craig Rouse
FAS Leadership
July 24, 2014

