

Spring 2024 ILO 1 Assessment Report

Introduction

This report documents the Bakersfield College (BC) Assessment Committee's evaluation of Institutional Learning Outcome (ILO) 1 during the 2023-2024 academic year. In Fall 2023, the committee planned to assess ILO 1 during the academic year, and the assessment was conducted in Spring 2024. The findings, outlined in this report, were overall very positive.

Assessing ILOs at Bakersfield College

Bakersfield College (BC) has four [Institutional Learning Outcomes](#) (ILOs), with the goal that every student who completes a degree or certificate will be able to achieve each ILO. The Assessment Committee's primary responsibility, as outlined in its [charge](#), is to "support student learning by ensuring that all assessment processes align with the college's mission, address the needs of students and the community, and meet legal and regulatory requirements." In line with this, the committee regularly assesses BC's four ILOs. Examples of previous assessments for other ILOs can be found on the committee's [Institutional Learning Outcomes Assessment](#) page.

Institutional Learning Outcome 1

Bakersfield College's Institutional Learning Outcome (ILO) 1 is: "Think: Think critically and evaluate sources and information for validity and usefulness."

Methodology for Assessing ILO 1

The Assessment Committee based its evaluation of ILO 1 on the successful assessments of ILO 2 and ILO 3, completed in 2021-22 and 2022-23, respectively. On the quantitative side, the committee collaborated with the Office of Institutional Effectiveness to analyze pre-existing assessment data from eLumen.

On the qualitative side, the committee sought campus-wide, cross-disciplinary participation by inviting BC faculty members to volunteer examples of assessments, referred to as "artifacts," from their courses. These artifacts demonstrated students' knowledge in a specific discipline or job-related skills. The committee then evaluated the submitted artifacts using a rubric they developed.

Results

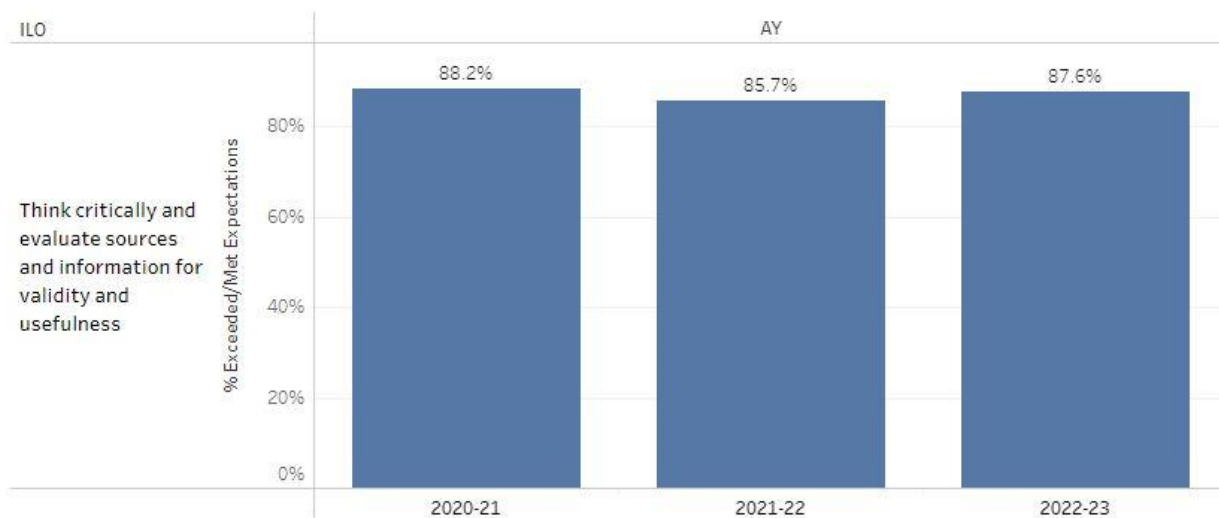
Tableau Data

To gather the quantitative data for the assessment of ILO 1, the Assessment Committee collaborated with its representative from the Office of Institutional Effectiveness, Sooyeon Kim (Director of Institutional Research). Ms. Kim developed an ILO Dashboard in Tableau, which contains data for all four of BC's ILOs. The Tableau dashboard features a drop-down menu that allows users to select data for the specific ILO they wish to view (see Figure 1).

Currently, the Tableau displays assessment data from 2020 to 2023, encompassing data from 1,103 courses with student learning outcomes mapped to ILO 1.

Across the three academic years assessed in the Tableau (2020-21 through 2022-23), an average of 87.2% of students met or exceeded expectations in courses where Student Learning Outcomes (SLOs) were mapped to ILO 1 (see below).

% Exceeded or Met Expectations



The percentage of students meeting or exceeding expectations each semester ranged from 85.7% to 88.2%. These high numbers indicate that BC students are successfully meeting expectations for ILO 1. The Assessment Committee defines "meeting expectations" as achieving a score of 70% or higher, while "exceeding expectations" refers to a score above 90%.

ILO 1 Artifacts

Artifact Recruitment

Artifacts showcasing evidence that students are asked to achieve ILO 1 (Think) at BC were recruited from faculty via an [official call for artifacts](#). 24 artifacts were submitted to the Assessment Committee from Bakersfield College faculty. These artifacts represent all 10 pathways (see chart below).

Pathway	Course Name
ACH	ENGL B1A
ACH	COMM B1
ACH	EMLSB50
ACH	EMLSB1A
ANC	NRES B2

ANC	FORE B1
ANC	SOIL B1
ANC	FDSV B55F
ANC	CRPS B5
BUS	BSADB20
EDUC	EDUC B24
HS	NURSB47
ITT	INDR B40
ITT	AUTO B11
ITT	AUTO B34
ITT	AUTO B33
PST	EMTC B12
SBS	LIBR B61NC
SBS	LIBR B1
SBS	ANTH B3
SBS	PSYC B20
STEM	PHYSB4B
STEM	BIOLB3A
STEM	BIOL B18

Artifact Assessment

To determine whether these artifacts indeed required students to think critically to problem-solve/ form opinions and/or evaluate sources of information for validity, usefulness and to draw conclusion, the Assessment Committee assessed each artifact. To do so, Assessment members were split into teams and assigned artifacts (outside of their areas) to assess using a rubric developed by the committee. Assessment Committee Faculty Co-Chair Rebecka Zepeda compiled the results in this spreadsheet. The results were overwhelmingly positive.

Of the 24 artifacts submitted, 23 met or exceeded expectations in asking students to think critically to problem-solve or form opinions. (Figure 1)

Assessment Rubric Results- Critical Thinking

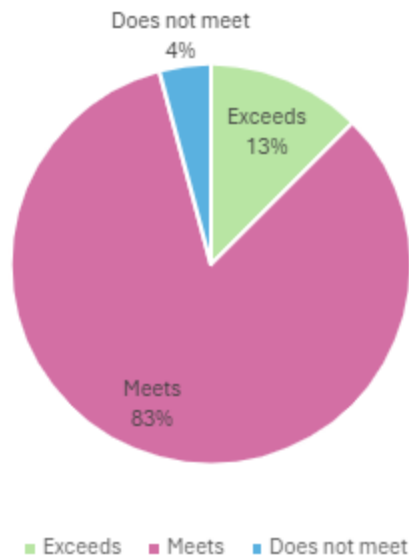


Figure 1. Pie chart showing results of ILO 1 assessment regarding critical thinking. 83% of artifacts met expectations, 13% exceeded expectations and 4% did not meet expectations.

Of the 24 artifacts submitted, only 14 fell under the category of “evaluating sources of information for validity, usefulness and to draw conclusions”. Of those 14, all met or exceeded expectations. No artifacts did not meet expectations for valuating sources of information for validity, usefulness and to draw conclusions. (Figure 2)

Assessment Rubric Results- Evaluating Sources

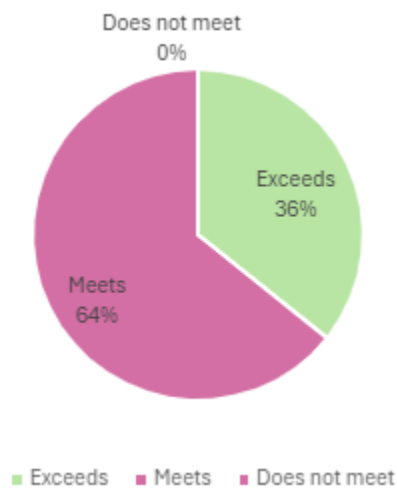


Figure 2. Pie chart showing results of ILO 1 assessment regarding evaluating information sources. 64% of artifacts met expectations, 36% exceeded expectations and 0% did not meet expectations.

Conclusion

The Assessment Committee concludes that Bakersfield College meets expectations for ILO 1: Think. Quantitative data reveals that, on average, 87.2% of students enrolled in courses mapped to ILO 1 from 2020-21 to 2022-23 met or exceeded expectations. Similarly, qualitative data shows that 96% of the submitted artifacts met or exceeded expectations in assessing students' ability to demonstrate knowledge or skills in their respective courses.