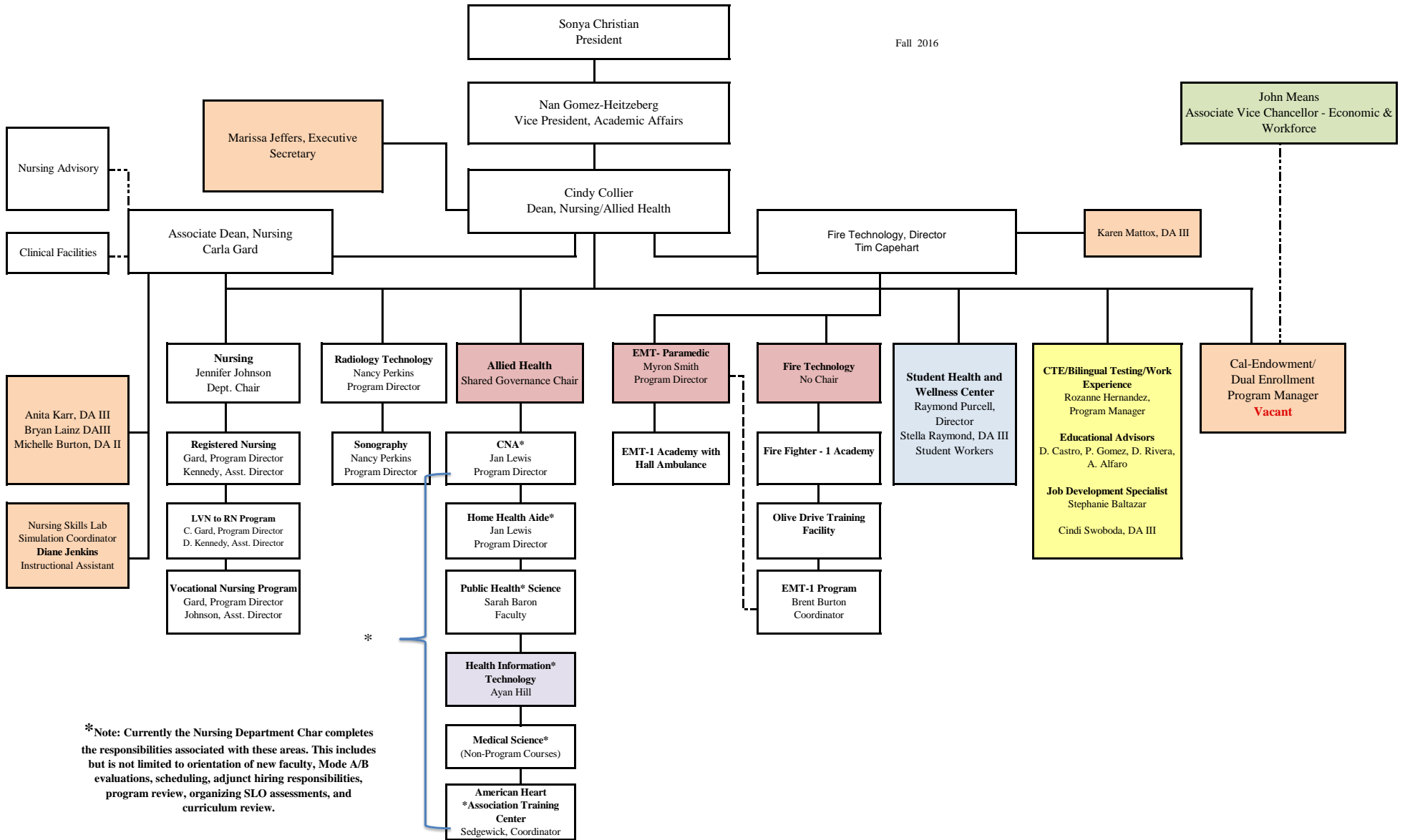


# NURSING/ALLIED HEALTH ORG CHART

Fall 2016



\*Note: Currently the Nursing Department Chair completes the responsibilities associated with these areas. This includes but is not limited to orientation of new faculty, Mode A/B evaluations, scheduling, adjunct hiring responsibilities, program review, organizing SLO assessments, and curriculum review.