

# BAKERSFIELD COLLEGE

## ANNUAL ADMIN STRUCTURE REVIEW

Chairs: *Nan Gomez-Heitzeberg*

Financial Analysis: *Anthony Culpepper/Laura Lorigo*

Classified: *Bernadette Martinez*

Faculty: *Ann Tatum, Jason Stratton*

Management: *Todd Coston, Cindy Collier*

Administrative Support: *Jennifer Marden*

# GUIDING PRINCIPLES AND DELIVERABLES

## Guiding Principle:

- Review and update administrative structure for 2015-16 that promotes the values, mission and strategic directions of the college.

## Deliverable:

- Complete annual review of the administrative organization that presents an updated administrative structure of Bakersfield College with the budgetary impact.

# PROCESS

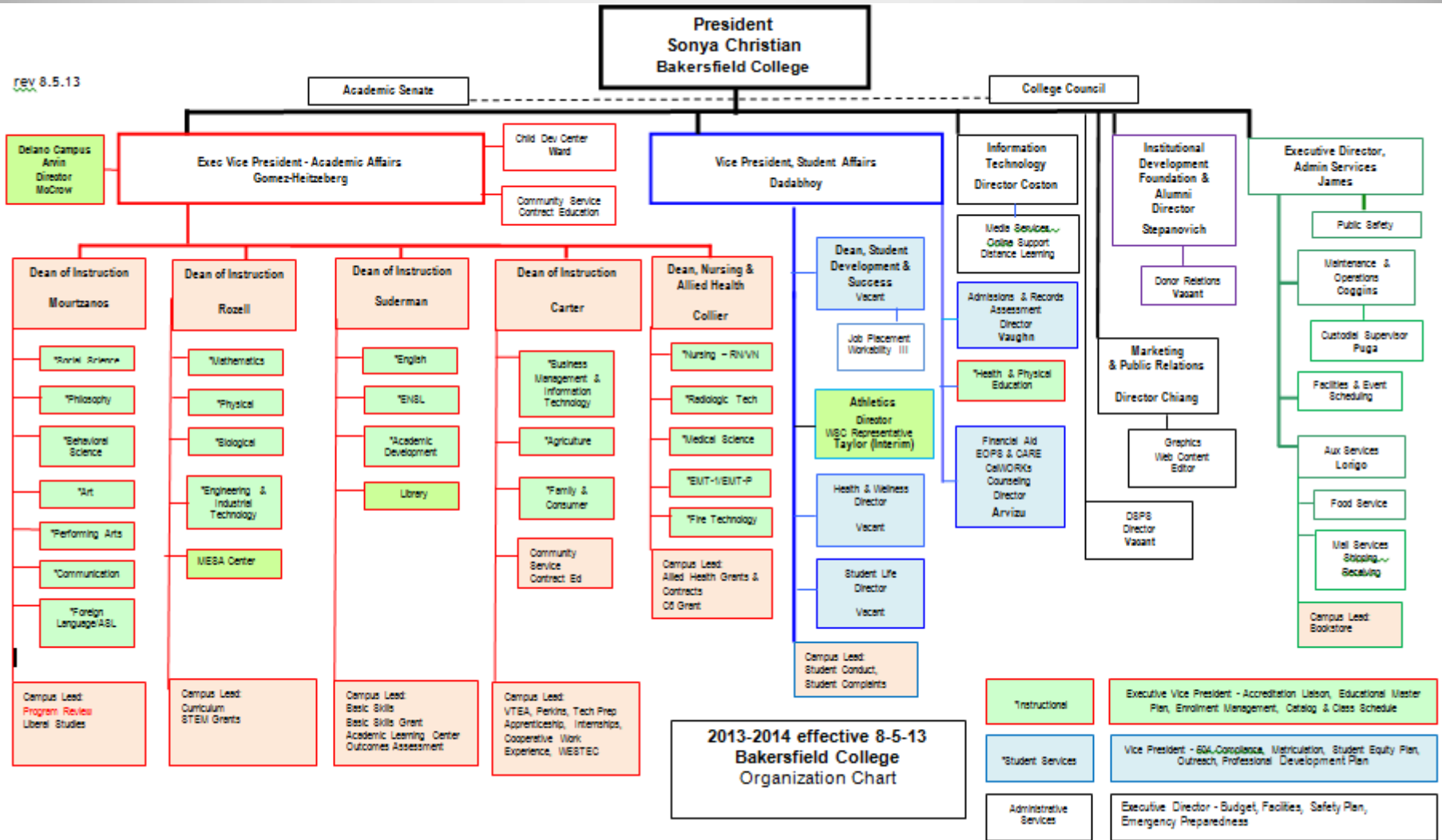
- Review Current Administrative Structure
- Identify Workload Components
  - FTEF
  - Classified FTE
  - College-wide Initiatives
- Identify Areas Of Need
  - Solicit College-wide Input Through Targeted Focus Groups
  - Evaluate The Budgetary Impact

# CONSIDERATIONS

- Deans Vs. Associate Deans
- Projected Number Of Deans Needed Including Academic Technology And Institutional Effectiveness
- Campus-wide Collaboration
- Intentionally Across Instructional And Service Areas

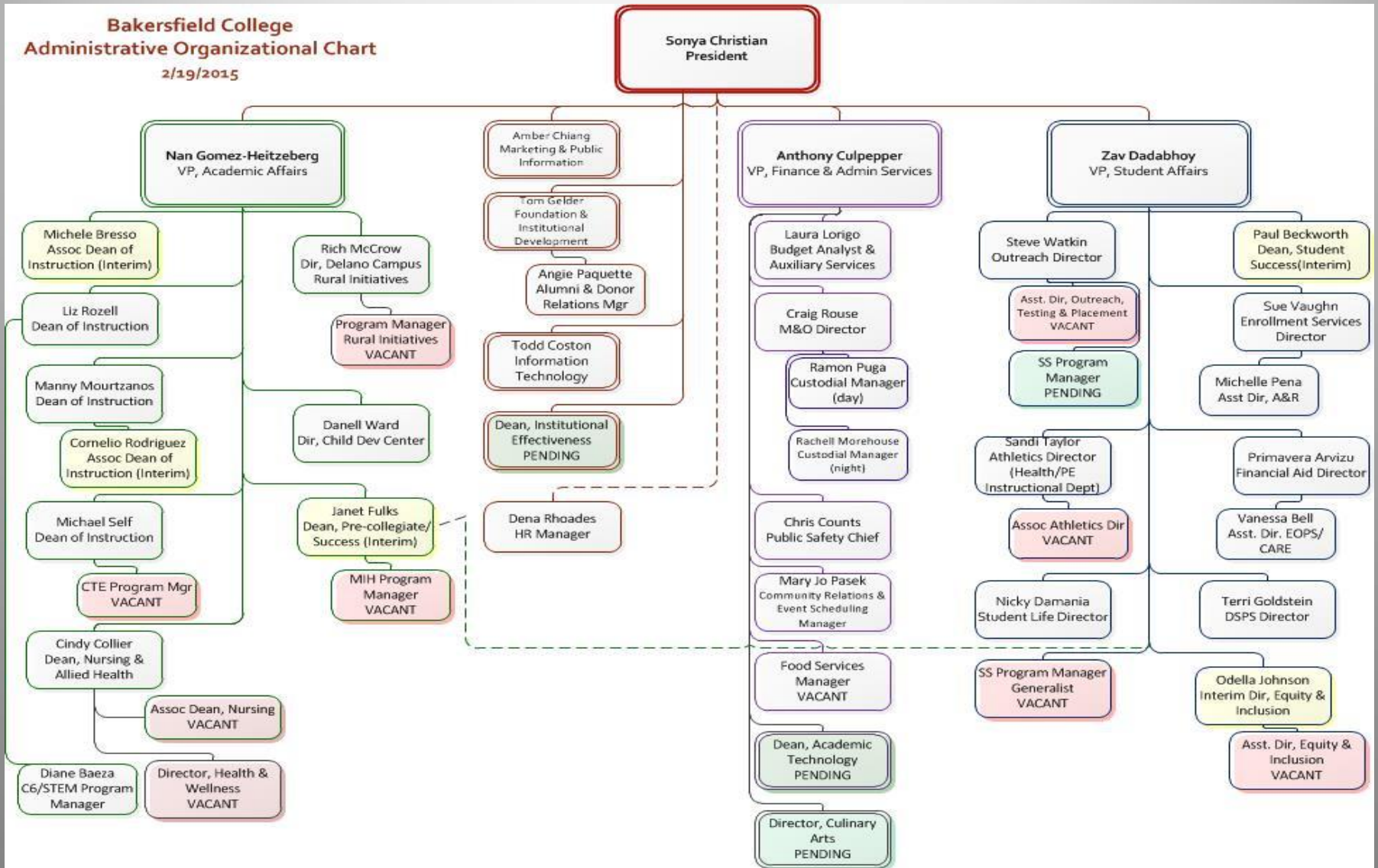
# AUGUST 2013 ORG CHART

rev 8.5.13



# CURRENT ADMIN ORG CHART

**Bakersfield College**  
**Administrative Organizational Chart**  
 2/19/2015



# REFLECTION

Reflect on the current administrative structure and share your thoughts on the benefits and disadvantages of this structure?

# COLLEGE WIDE INITIATIVES

MIH

Pre-collegiate

BSI

BAS

Rural Initiative

C6

STEM

Pre-Law

Social Justice Institute: LEA

Veterans

Prison Education

AB 86 - Adult Education

CCPT Pathway Academies – Logistics

Dual Enrollment

Apprenticeship/Internships

Equity & Inclusion

Scorecard – Data Coaches, Institutional Research

Paramount Academy/McFarland/Wasco- dual enrollment Ag Pathways Grant



# REFLECTION

In thinking about the future growth and innovation at BC please describe the ideal administrative structure from your unique perspective.

# NEXT STEPS

## Focus Groups:

- College Council, February 20 (Ann Tatum, Nan Gomez-Heitzeberg)
- President's Cabinet, February 23 (Nan Gomez-Heitzeberg/Todd Coston)
- Academic Senate, February 25 (Jason Stratton, Todd Coston)
- CSEA Meeting, February 26 (Bernadette Martinez/ Nan Gomez-Heitzeberg)
- FCDC, February 27 (Bernadette Martinez/ Nan Gomez-Heitzeberg)
- Delano Center, TBD (Bernadette Martinez/ Ann Tatum)

## Final Presentation to College Council:

- March 6, 2015